



US00D772156S

(12) **United States Design Patent** (10) **Patent No.:** **US D772,156 S**
Bleck et al. (45) **Date of Patent:** **** Nov. 22, 2016**

(54) **ROOFTOP SOLAR PARAPET** D600,638 S * 9/2009 Plaisted D13/102
8,011,150 B2 * 9/2011 Luttrell E04D 3/405
52/169.14

(71) Applicants: **Paul Bleck**, Kailua-Kona, HI (US);
James J. Farrell, III, Austin, TX (US) 8,487,180 B1 * 7/2013 Fraas F24J 2/4638
136/243

(72) Inventors: **Paul Bleck**, Kailua-Kona, HI (US);
James J. Farrell, III, Austin, TX (US) 2003/0177705 A1 * 9/2003 Forbis, Sr. E04D 13/00
52/3
2005/0235578 A1 * 10/2005 Heidler, Jr. E04D 3/405
52/58

(**) Term: **15 Years** 2006/0266352 A1 * 11/2006 Marston F24J 2/5239
126/621

(21) Appl. No.: **29/505,487** 2007/0120696 A1 * 5/2007 McRae G08B 13/10
340/686.1

(22) Filed: **Nov. 20, 2015** 2008/0313976 A1 * 12/2008 Allen H01L 31/048
52/173.1

Related U.S. Application Data

(62) Division of application No. 29/474,576, filed on Nov. 10, 2014, now Pat. No. Des. 752,508.

(51) **LOC (10) Cl.** **13-02**

(52) **U.S. Cl.**
USPC **D13/102**

(58) **Field of Classification Search**
USPC 126/580, 581, 611, 621, 622, 623;
136/200, 243, 244, 245, 251, 256, 291;
438/66, 72, 80; D13/101, 102, 107,
D13/110, 112, 118, 122, 184, 199;
D25/119, 138, 139, 156; 52/173.3
CPC Y02E 10/50; Y02E 10/544; H02S 20/23;
H01L 31/042

See application file for complete search history.

(56) **References Cited**

U.S. PATENT DOCUMENTS

4,020,827 A * 5/1977 Broberg F24J 2/045
126/623

5,505,788 A * 4/1996 Dinwoodie F24J 2/34
136/244

5,661,929 A * 9/1997 Ross E04F 19/00
52/300

* cited by examiner

Primary Examiner — Derrick Holland
Assistant Examiner — Jennifer O King
(74) *Attorney, Agent, or Firm* — Chris Whewell

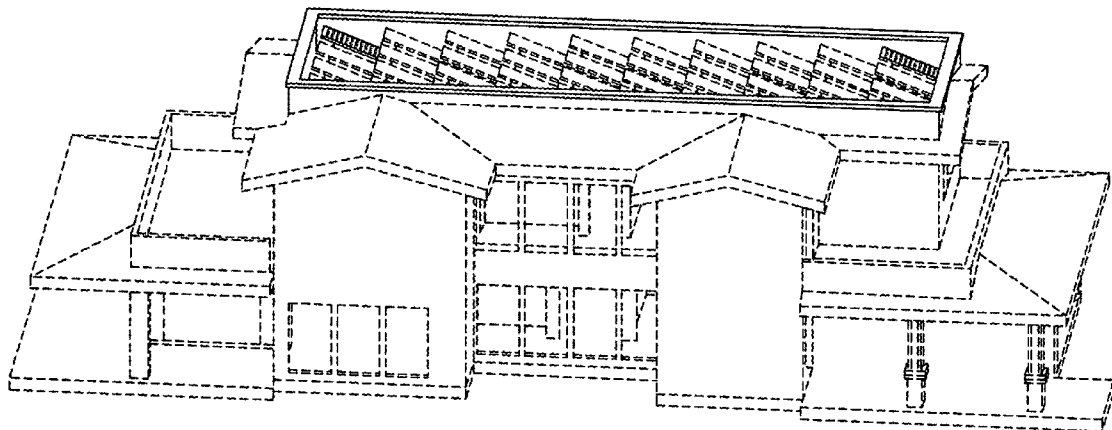
(57) **CLAIM**

We claim the ornamental design for a rooftop solar parapet, as shown and described.

DESCRIPTION

FIG. 1 is a perspective view of a rooftop solar parapet; FIG. 2 is a top plan view thereof; and, FIG. 3 is another top plan view thereof, in which the adjacent roofs are not shown for ease of illustration. The broken lines shown represent unclaimed subject matter and form no part of the claimed design.

1 Claim, 3 Drawing Sheets



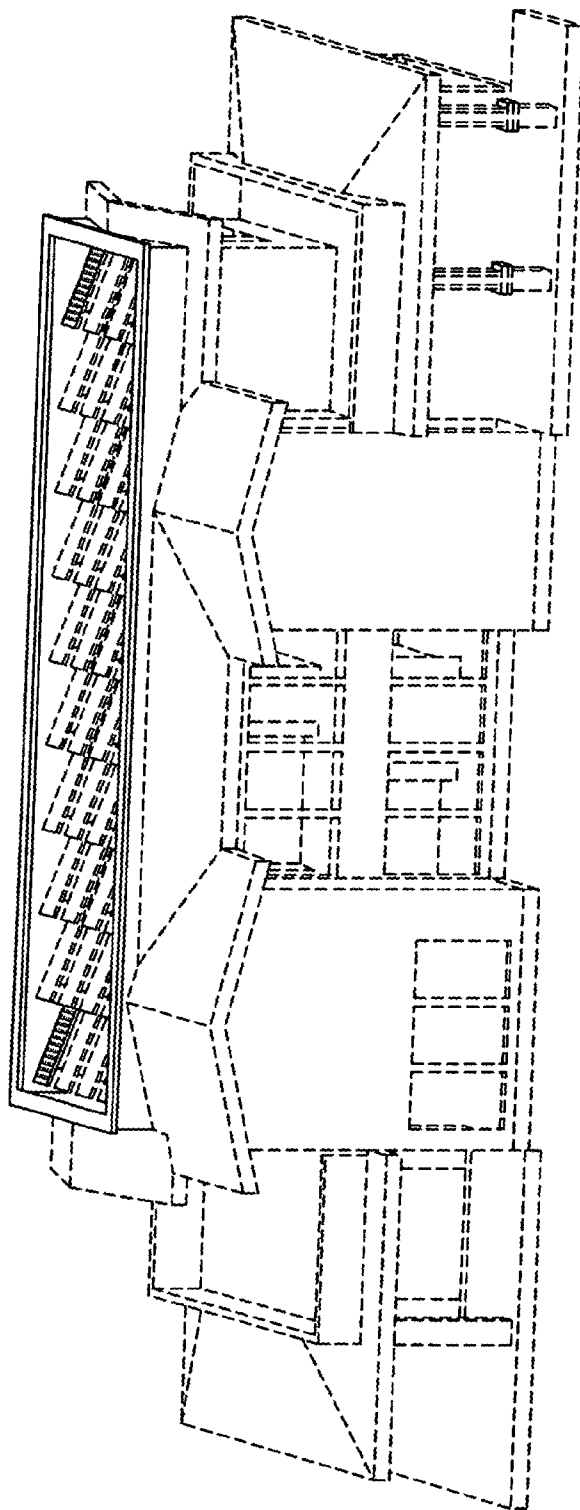


Fig. 1

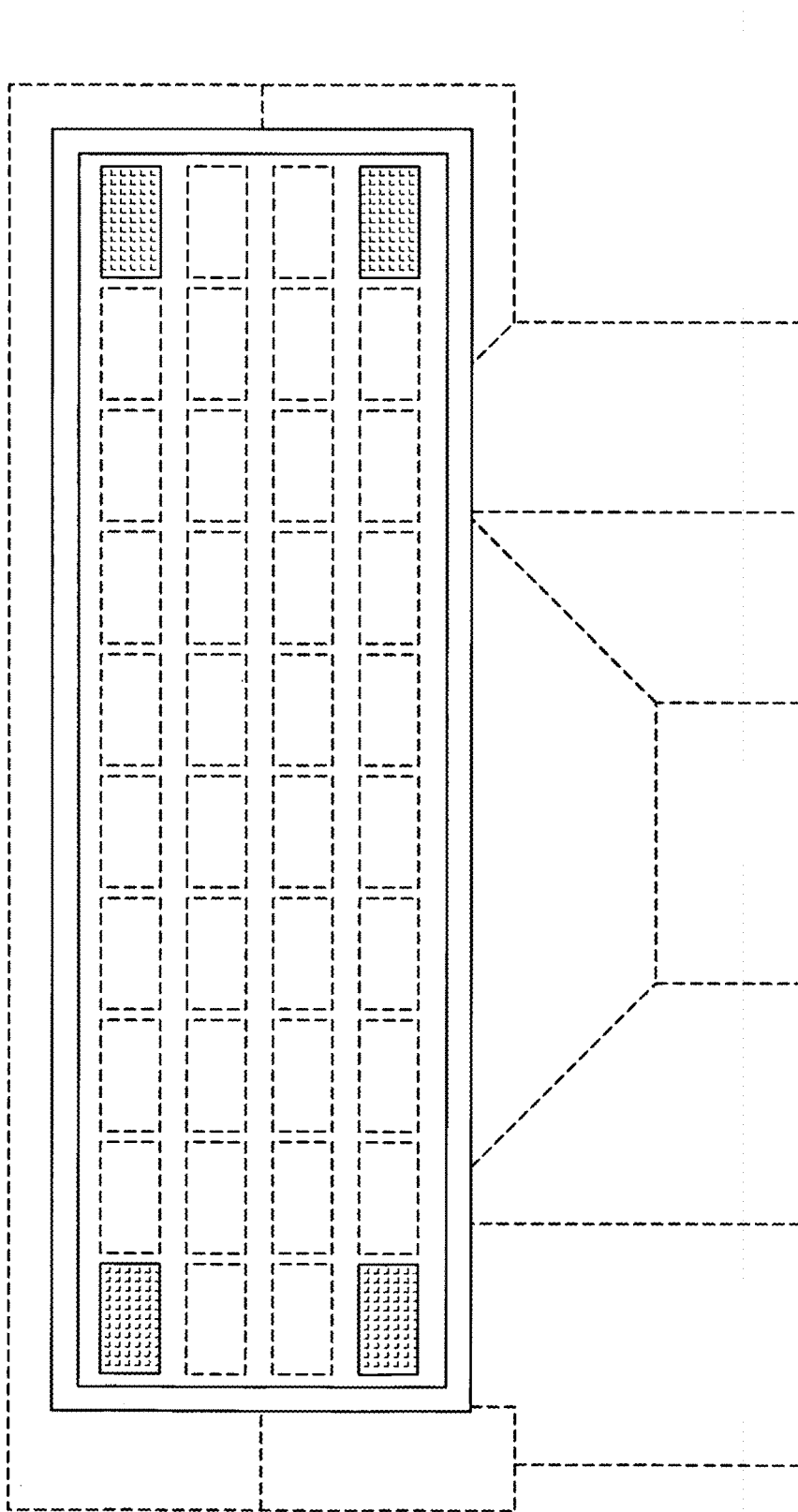


Fig. 2

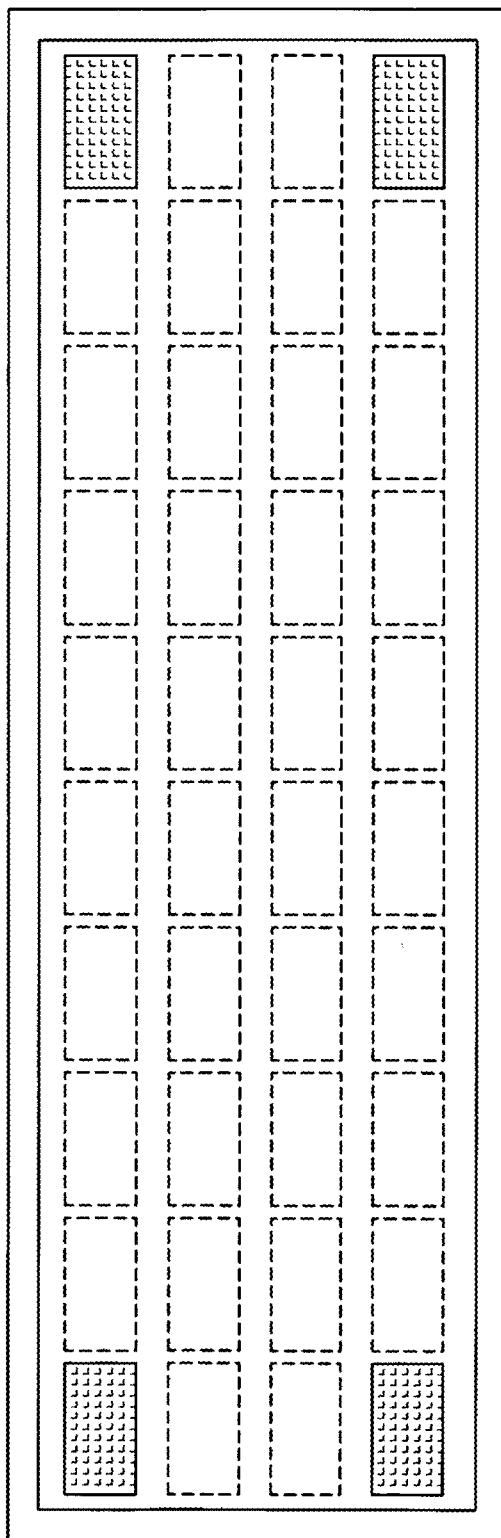


Fig. 3